

KN Crowder

SDL Louver Finishes Colour Options & Re-coating Instructions

KN Crowder's steel door louvers (SDL) are finished using a VOC-free electrostatic painting process, which attracts paint evenly to all exposed metal surfaces. This ensures a uniform, continuous coating – inside and out – for enhanced protection against moisture and dust, resulting in a longer product lifespan.



Mineral Bronze (B)



AMS Beige (AB)



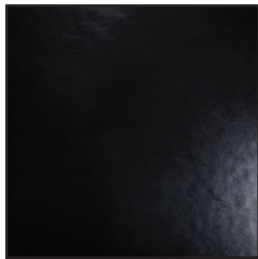
SC Beige (SB)



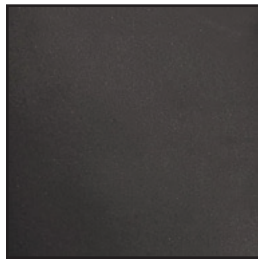
Sand (S)



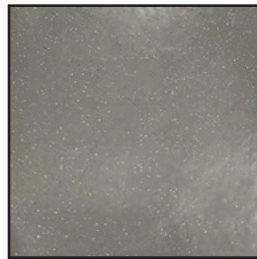
Brass (BRA)



Black (BK)



Flat Black (FBK)



Gray (G)



Silver (SI)



White (W)

Stock Finish

The standard in-stock finish for all SDL models is Mineral Bronze, with the exception of the SDL-TR70, which comes standard in Gray.

Other Finishes

Additional finishes, shown above, are available upon request.

Please contact Customer Service at customerservice@kncrowder.com for current lead times and pricing.

Re-coating Instructions (Steel & Galvannealed Louvers only)

Powder-coated SDL Louvers made from steel or galvannealed steel may be re-coated in the field by following these steps:

Step #1: Abrasive Prep

Lightly abrade the entire surface with a non-shredding, non-rusting, non-splintering abrasive pad.

Step #2: Surface Cleaning

Thoroughly clean all parts before painting. After abrading, wipe down the surface with an alcohol-based cleaner to remove residue and reopen the surface for optimal paint adhesion. Always follow the cleaner manufacturer's instructions.

Step #3: Re-coating

Apply a high-quality paint suitable for metal.

Note: KN Crowder cannot guarantee the performance of any specific paint brand.